

Carrier 30 RBM 330

Specifications

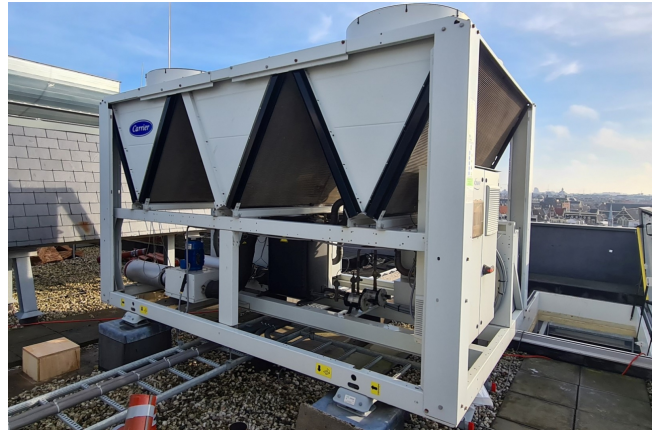
Merk	Carrier
Type	30 RBM 330
Product type	Air Cooled Chiller
Capaciteit kW	331,0
Capaciteit Tons	94,1
Koudemiddel	Freon
Koudemiddel Type	R-410A
Pump	✓
Hydronic Module	✓
Gewicht in kg.	2101
Afmetingen	3770x2240x2400 mm (LxWxH)
Compressor(s) type & model	5x Performer SH295A4ACE
Display	Touch Pilot
Number of fans	5
Opmerkingen	Y.o.b. 2017
Opmerkingen	Ultra low running hours
Stock	2



Description

Used Carrier 30 RBM 330

In goede staat verkerende Carrier 30 RBM 330 luchtgekoelde chiller bouwjaar 2017 met hele lage draaiuren. Compleet met 5 Performer SH295A4ACE scroll-compressoren, platenwarmtewisselaar, aluminium microkanaalcondensator met 5 ventilatoren, vloeistofleidingfilters, hydromodule en een Touch Pilot-bedieningspaneel.



1- SERIAL NUMBER NUMERO DI SERIE	M2017005779			
2- MODEL MODELLO	30RBM-330-0076-PE-			CE 0062
47- DESCRIPTION DESCRIZIONE	30RBM/RBP			
3- VARIANT VERSIONE	30RBM/RBP			
4- YEAR OF MANUFACTURE AND TEST DATE ANNO E DATA DI COSTRUZIONE	24/05/2017			
48- HERMETICALLY SEALED EQUIPMENT APPARECCHIATURE SIGILLATE ERMETICAMENTE	N			
49- CONTAINS FLUORINATED GREENHOUSE GASES CONTIENE GAS FLUORURATI EFFETTO SERRA	Y			
25- FLUID DURING TRANSPORT LIQUIDI DURANTE IL TRASPORTO	R-410A	35.60	kg	
5- REFRIGERANT REFRIGERANTE	R-410A	6- PED GROUP 2 GRUPPO PED	GWP	2088
50- CIRCUIT CIRCUITO	A	B	C	
7- FACTORY CHARGE CARICO FABBRICA	15.40	/ 20.20	/ *	kg
51- CHARGE ADDED ON SITE CARICO AGGIUNTO IN SEDE	/	/	/	kg
52- TOTAL CHARGE CARICO TOTALE	15.40	/ 20.20	/ *	kg
	32.16	/ 42.18	/ *	t.eq.CO2
9- INERTING MEDIUM CARICA DI TENUTA	23- NITROGEN			
10- ALLOWABLE PRESSURE MIN/MAX MIN/MAX PRESSIONE AMMISSIBILE	(PS) (-1.0 / 44.2 bar)	21- HIGH PRESSURE ALTA PRESSIONE	22- LOW PRESSURE BASSA PRESSIONE	
	-99.0 / 4420.0 kPa	-1.0 / 31.1 bar	-99.0 / 3110.0 kPa	
11- ALLOWABLE TEMPERATURE MIN/MAX MIN/MAX TEMPERATURA AMMISSIBILE	(TS) -20.0 / 68.0 °C		-20.0 / 52.0 °C	
12- PRESSURE SAFETY SWITCH SETTING 1/2 TARATURA PRESSOSTATI DI SICUREZZA 1/2	44.2 / *	bar	*/ *	bar
13- RELIEF VALVE SETTING PRESSIONE DI INTERVENTO VALVOLA DI SICUREZZA	*	bar	*	bar
24- RUPTURE DISKS SETTING PRESSIONE DI INTERVENTO DEI DISCHI DI ROTTURA	*	bar	*	bar
14- UNIT LEAK TEST PRESSURE PRESSIONE DI PROVA			17.0	bar
15- VOLTAGE TENSIONE	400 V	+10 % -10 %	16- PHASES 3 FASI	17- FREQUENCY ~ 50 Hz FREQUENZA
18- MAXIMUM AMPS MAX CORRENTE	272.00	/ *	A	44- IP 54 IP
19- MAX POWER INPUT POTENZA ASSORBITA	165.00	/ *	kW	
20- NET WEIGHT PESO NETTO	2101	kg	+5 % -5 %	

Carrier MANUFACTURED IN FRANCE BY
CARRIER SCS - 01120 MONTLUEL - FRANCE
AN AFFILIATED COMPANY OF CARRIER CORPORATION
FARMINGTON CT, USA

United Technologies

PLS_TriCkt_V4r1





